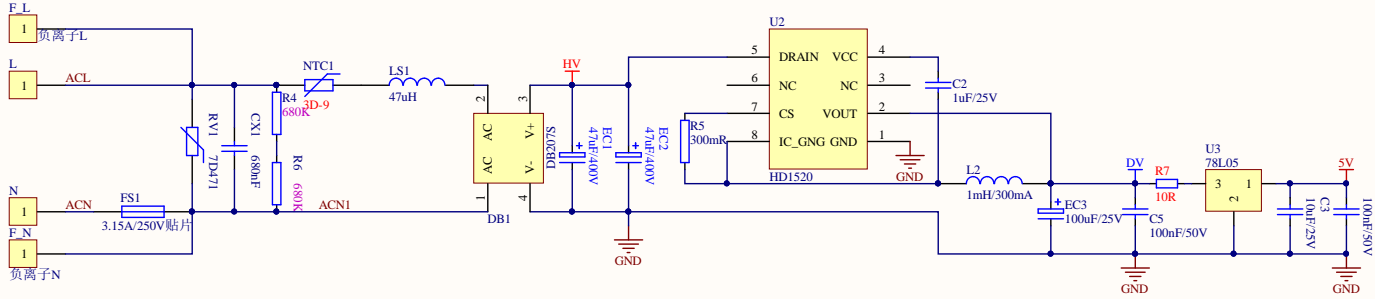
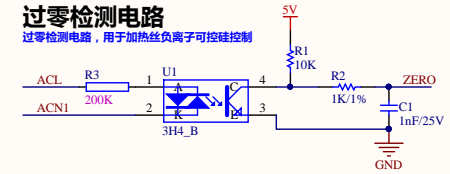


### 电源电路

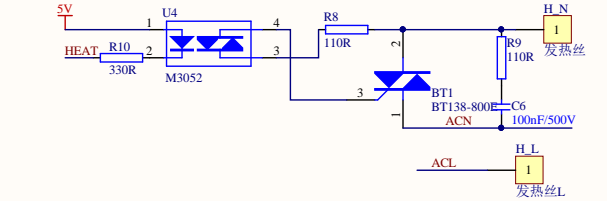


### 过零检测电路

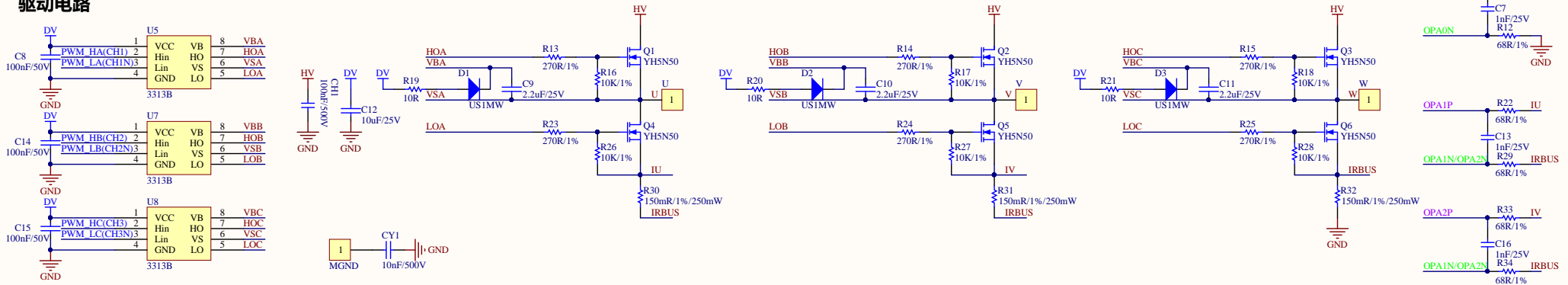
过零检测电路，用于加热丝负离子可控硅控制



### 发热丝电路

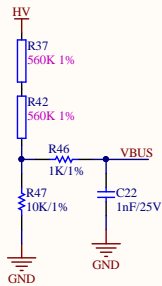


### 驱动电路

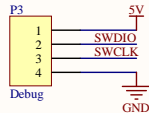
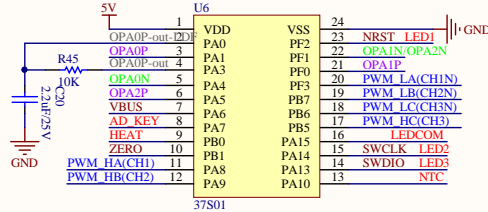
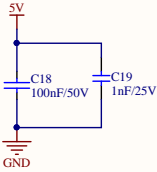


使用FM3313B是可以NC: R19、R20、R21; D1、D2、D3;

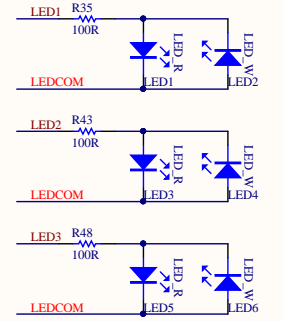
### 电压检测



### 主控

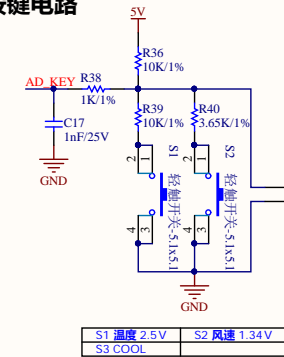


### LED电路



LED1,LED3,LED5为一组; LED2,LED4,LED6为一组

### 按键电路



S1	温度 2.5V
S2	风速 1.34V
S3	COOL

### NTC电路

